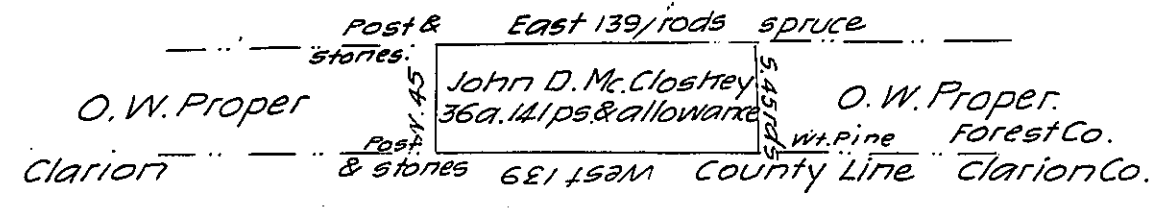


Wm. M. Biddle now  
H. P. Ford & others

Wm. M. Biddle now  
H. P. Ford & others.

5501. 5500



3339.

Owners Unknown  
Warranted to Robt Gilmore

A Draft of a tract of land in the township of Green, County of Forest, containing thirty six (36) acres, one hundred and forty one (141) perches and allowance of six (6%) for roads &c. Surveyed the fifteenth (15<sup>th</sup>) day of September 1882 in pursuance of a Warrant granted to John D. Mc Clostrey dated the (11<sup>th</sup>) day of July 1882.

To Hon. A. H. Dunlap

H. C. Whittetkin

Secy. of Int. Affairs of Pennsylvania

Dept. Surveyor

Examined, found correct and approved this 3d. day of November 1882.

F. F. Whittetkin

Subsequent information

County Surveyor for Forest Co., Pa.

Improved, 1856. F. F. Whittetkin C.S. Dec. 26<sup>th</sup> 1882.

IN TESTIMONY that the above is a copy of the original remaining on file in the Department of Internal Affairs of Pennsylvania, made conformably to an Act of Assembly approved the 16th day of February 1833, I have hereunto set my hand and caused the Seal of said Department to be affixed at Harrisburg, this eighth day of January 1908

*Henry Howell*  
Secretary of Internal Affairs.